

# State of Wyoming Corner Record

(in compliance with the CORNER PERPETUATION AND FILING ACT, Wyoming Statutes, 1997, Section 33-29-140, et. seq. and the Rules and Regulations of the Board of Registration for Professional Engineers and Professional Land Surveyors)

Reverse side of this form may be used if more space is needed.

Record of original survey and citation of source of historical information (if corner is lost or obliterated). Description of corner monumentation evidence found and/or monument and accessories established to perpetuate the location of this corner. Sketch of relative location of monument, accessories, and reference points with course and distance to adjacent corner(s) (if determined in this survey). Method and rationale for reestablishment of lost or obliterated corner.

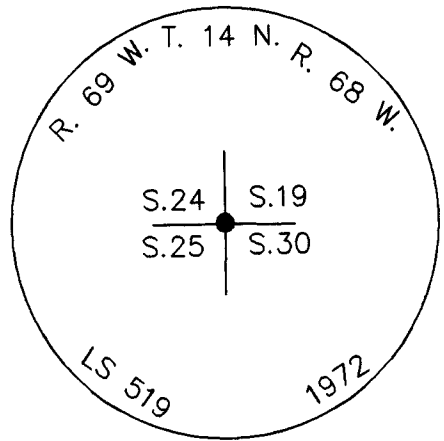
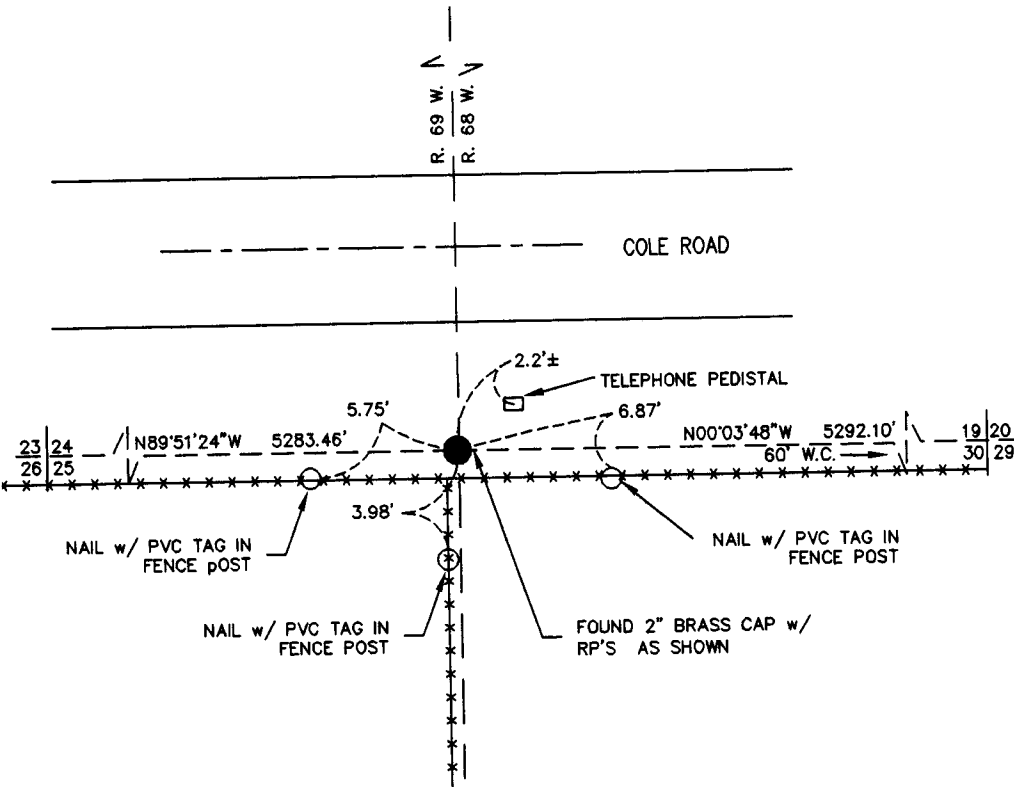
FOUND: BRASS CAP, 2" DIAMETER IN GOOD CONDITION, SET 0.2' BELOW GROUND.

G.L.O. RECORD: GRANITE STONE 14" x 10" x 6"

SET: NOTHING

REFERENCES: SET AS SHOWN

RECORDED 12/31/2003 AT 1:40 PM REC# 375053 BK# 1784 PG# 1256  
DEBRA K. LATHROP, CLERK OF LARAMIE COUNTY, WY PAGE 1 OF 1



FOUND MONUMENT DETAIL

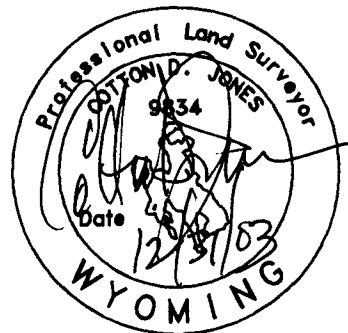
Date of Field Work: 12-03 Office Reference: 2-2389.03

**CROSS INDEX DIAGRAM**

A	1	2	3	4	5	6	7	8	9	10	11	12	13	14	15	16	17	18	19	20	21	22	23	24	25
B																									
C	6		5		4		3		2		1														
D																									
E																									
F																									
G	7		8		9		10		11		12														
H																									
J																									
K																									
L	18		17		16		15		14		13														
M																									
N																									
O																									
P	19		20		21		22		23		24														
Q																									
R																									
S																									
T	30		29		28		27		26		25														
U																									
V																									
W																									
X	31		32		33		34		35		36														
Y																									
Z	1	2	3	4	5	6	7	8	9	10	11	12	13	14	15	16	17	18	19	20	21	22	23	24	25

Firm/Agency, Address  
Cotton D. Jones, P.L.S.  
A.V.I., p.c.  
2035 Westland Road  
Cheyenne, WY 82001  
Telephone Number: (307) 637-6017

This corner record was prepared by Bruce Perryman under my direction and supervision.  
**SEAL & SIGNATURE**



Corner Name: SECTION CORNER Section: 2419 25130 T 14N R 69W; 6th P.M. Cross-Index No.: R-25  
SBRPEPLS/PLSW: March 1994